



SEE THE DIFFERENCE!

The higher resolution of the FLIR ONE Pro produces sharper edges and better image quality than the FLIR ONE Pro LT.

| Specifications by product | FLIR ONE Pro LT | FLIR ONE Pro |
|---------------------------------------|---|----------------------------------|
| Thermal pixel size | 17 μ m | 12 μ m |
| Thermal resolution | 4,800 pixels (80 \times 60) | 19,200 pixels (160 \times 120) |
| Thermal sensitivity | 100 mK | 70 mK |
| Object temperature range | -20°C to 120°C (-4°F to 248°F) | -20°C to 400°C (-4°F to 752°F) |
| Common Features | | |
| Measurement accuracy | $\pm 3^\circ\text{C}$ (5.4°F) or $\pm 5\%$, typical percent of the difference between ambient and scene temperature. Applicable 60 sec after start-up when the unit is within 15°C to 35°C (59°F to 95°F) and the scene is within 5°C to 120°C (41°F to 248°F) | |
| Spectral range | 8 – 14 μ m | |
| Visual resolution | 1440 \times 1080 | |
| HFOV / VFOV | 50° $\pm 1^\circ$ / 43° $\pm 1^\circ$ | |
| Frame rate | 8.7 Hz | |
| Focus | Fixed: 15 cm – infinity | |
| Adjustable MSX distance | 0.3 m – infinity | |
| Image presentation modes | Infrared, visual, MSX, gallery | |
| VividIR | Yes | |
| Palettes | Gray (white hot), Hottest, Coldest, Iron, Rainbow, Rainbow HC, Arctic, Lava, and Wheel | |
| Capture modes | Video, photo, time lapse | |
| Video and still image display/capture | Saved as 1440 x 1080 | |
| File formats | Radiometric JPG, MPEG-4 (file format MOV (iOS), MP4 (Android)) | |
| Spot meter | On/off; resolution 0.1°C (0.1°F) | |
| Mechanical shock | Drop from 1.8 m (5.9 ft) | |

CORPORATE HEADQUARTERS

FLIR Systems, Inc.
27700 SW Parkway Ave.
Wilsonville, OR 97070
USA
PH: +1 877.773.3547

NASHUA

FLIR Systems, Inc.
9 Townsend West
Nashua, NH 03063
USA
PH: +1 866.477.3687

LATIN AMERICA

FLIR Systems Brasil
Av. Antonio Bardella, 320
Sorocaba, SP 18085-852
Brasil
PH: +55 15 3238 7080

CANADA

FLIR Systems, Ltd.
920 Sheldon Court
Burlington, ON L7L 5K6
Canada
PH: +1 800.613.0507

See the Heat.[®]
Solve the Problem.



INTRODUCING THE FLIR ONE[®] PRO-SERIES

Which model is right for you?



THE PROFESSIONAL-GRADE THERMAL CAMERA FOR YOUR TOUGHEST JOBS

FLIR ONE Pro-Series cameras have the power to find problems quickly and ensure you repaired them correctly.

Features such as spot measurement tools, adjustable temperature controls, and a range of color palettes can help you pinpoint the heat differences that indicate trouble. Both Pro-Series cameras offer MSX® enhancement for better perspective on the scene, as well as our revolutionary VividIR™ image processing for a 4x boost in resolution and clarity. The FLIR OneFit™ adjustable connector extends up to 4 mm to fit many popular protective cases.

Whether you're an electrician, mechanical inspector, automotive technician, or HVAC professional, FLIR ONE Pro-Series cameras work as hard as you do.

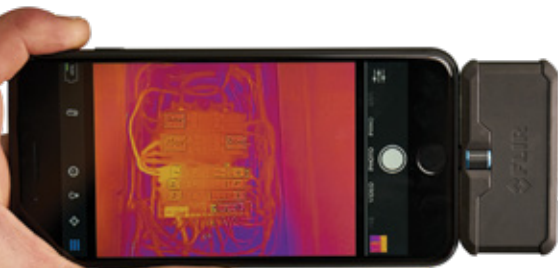


OneFit connector allows use with many protective cases

Visual camera contributes details for MSX enhancement

Thermal camera provides wide, 50° HFOV

Records JPEGs, video files, and time-lapse



FLIR ONE® PRO LT

- Most affordable FLIR ONE Pro-Series thermal camera
- Thermal image resolution of 4,800 pixels
- Temperature measurements up to 120°C (248°F)
- The thermal sensitivity needed to detect temperature differences down to 100 mK

FLIR ONE® PRO

- The highest thermal image resolution at 19,200 pixels—a 4x improvement over the Pro LT
- Maximum temperature measurements that are 3x higher than the Pro LT—up to 400°C (752°F)
- The thermal sensitivity needed to detect temperature differences down to 70 mK